



## 15 Goose Green

Dalton-In-Furness, LA15 8LQ

Offers In The Region Of £280,000





# 15 Goose Green

Dalton-In-Furness, LA15 8LQ

**Offers In The Region Of £280,000**



This three bedroom detached cottage has gardens to the front and side, providing an idyllic rural retreat while still being close to Dalton Market Town. Inside you will find a range of original features that give the property a wealth of character and charm.

As you approach the property there is a spacious front garden with slate chippings and a patio walk way to the front door. Space for outdoor seating and entertainment.

Upon entering the property you arrive into the vestibule which provides access to the lounge. The lounge has been neutrally decorated and boast original features and beams with a feature fire place. The breakfast kitchen has been fitted with a range of wood effect wall and base units with laminate work surfaces. There is also a breakfast bar, space for freestanding appliances and a feature fire place. Both bedrooms are a generous size and boast original features. The family bathroom has been fitted with a three piece suite comprising of a low level flush WC, pedestal sink and a bath.

To the second floor is the third bedroom and en-suite shower room. The bedroom has been neutrally decorated with white painted walls, carpeting and stunning beams. The en-suite has been fitted with a three piece suite comprising of a low level flush WC, pedestal sink and a shower cubicle with thermostatic shower.

To the side of the property there is a garden with slate chippings and patio areas again ideal for outdoor seating and entertainment.

## Vestibule

## Lounge

17'8" x 12'5" max (5.39 x 3.80 max )

## Breakfast Kitchen

19'5" x 6'9" (5.93 x 2.08 )

## Bedroom One (First Floor)

10'4" x 10'2" (3.16 x 3.10 )

## Bedroom Two (First Floor)

11'11" x 9'8" (3.64 x 2.96 )

## Family Bathroom

7'1" x 7'7" (2.16 x 2.32 )

## Bedroom Three (Second Floor)

12'3" x 7'1" min 12'7" into eaves (3.75 x 2.16 min 3.86 into eaves )

## En-Suite Shower Room

4'5" x 7'3" min 12'8" max into eaves (1.36 x 2.22 min 3.88 max into eaves )

- Lovely Family Home
- Popular Location
- Neutral Décor
- Gardens to Front and Side
- Traditional Cottage
- Exposed Beams
- Gas Central Heating
- Council Tax Band - B





## Road Map



## Hybrid Map

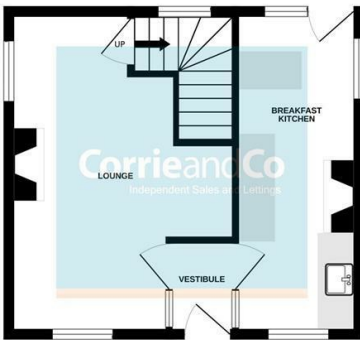


## Terrain Map

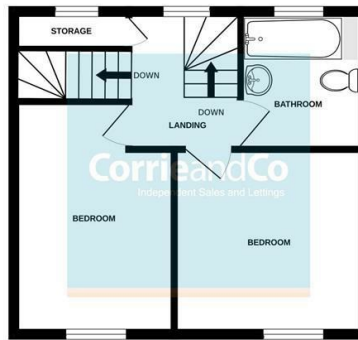


## Floor Plan

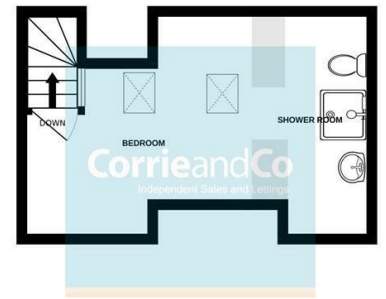
GROUND FLOOR



1ST FLOOR



2ND FLOOR



Whilst every attempt has been made to ensure the accuracy of the floorplan contained here, measurements of doors, windows, rooms and any other items are approximate and no responsibility is taken for any error, omission or mis-statement. This plan is for illustrative purposes only and should be used as such by any prospective purchaser. The services, systems and appliances shown have not been tested and no guarantee as to their operability or efficiency can be given.  
Made with Metropix ©2023

Corrie and Co aim to sell your property at the best possible price in the shortest possible time. We have developed a clear marketing strategy to ensure that your property is fully exposed to the local, regional and national market place and we are confident that we can provide a marketing service second to none. Our Sales Team offer:

- Full colour contemporary sales literature with floorplans
- A full programme of local / regional advertising and promotion on the Corrie and Co and Rightmove websites
- 24/7 promotion in our Barrow, Ulverston and Millom offices
- Professional viewing service and prompt feedback
- Experienced, friendly staff
- Eye catching 'For Sale' board

To ensure your move is looked after, we can help you with an Energy Performance Certificate and arrange a free mortgage and finance review. We also provide a competitive No Sale – No Fee conveyancing service with well known and trusted local solicitors. Our valuation and sales advice is impartial, completely free with no obligation.

Unlike many High Street Estate Agency chains, Corrie and Co are wholly independent and can therefore recommend the mortgage and lender that is most suitable for your needs. Our aim is to provide quality advice and expertise at all times so that you can make an informed decision every step of the way.

